

## KMS EXECUTIVE COMMITTEE

### VAWI 4-NA NEIH A NI

Dt.12.08.13 khan 2013-2014 chhunga KMS Executive Committee vawi lina chu Pu Lalzuilliana te in Ballygunge-ah neih a ni a, thu pawimawh tak tak rel ho a ni.

Fresher's Social hman dan thlirlet a ni a, tha kan tiin zawngchhangthlak hein kan hria. Member-te'n thuawih taka a hun takah kan kal avangin Committee chuan member-te chungah lawmthu a sawi a, thu kan awih avangin KMS Sport pawh tihhlawhtlin ngei ni se tiin a rel a; a hun atan September ni 30 atanga October ni 2 thleng a ni ang. Intihsiakna turte chu Mipa football leh basketball, hmeichhe spoon race leh death ball(hmeichhe items bik hi a remdan anga belh theih a ni ang.)

Committee chuan kuminah hian annual magazine siam leh ngei tha a ti a, november thla tawp lama tihchhuah hman tum a ni ang.

#### CMWA

Dt.15.08.13 khan Calcutta Mizo Welfare Association General Assembly Cum Election neih a ni a, hun hlimawm tak hman ho niin tlaiah chaw hlui kil ho nghal a ni. Hemi hunah hian kumin chhunga Calcutta Mizo Welfare Association hruaitu turte thlan chhuah an ni; he'ng mite hi 2013-2014 chhunga CMWA hruaitu turte chu an ni:-

- 1) President- Pu Laima Chozah
- 2) V.President- Pu Lalzirliana
- 3) Secretary- Pu Lalramsanga
- 4) Asst. Secretary- Pu Vanlalchhuanga
- 5) Treasurer- Pu Lalzuilliana
- 4) Fin. Secretary- Pu Mopha

Hruaitu thar leh hluite charge inhlanna hun hi dt.17.08.13 khan President kalchhuak ta Pu Benjamin-a te inah hman a ni.

KMS Annual Fund chu September thla chhunga khawn tura ruahman a ni a, Kolkata-a Mizo, KMS member ni thei chin chuan annual fund hi lo pe vek turin kan inngan a ni.

KMS Sport kan neih tur atana sum(advertisement/sponsorship) ngaihtuah turin committee member engemawzat ruat an ni.

Kan hmalama kan tihtur hmachhawpte tha taka kan tih hlawhtlin theih na'n Committee chuan member-te tawiawmna a ngen takmeuh a ni. Pu Lalzuilliana te chhungkuain committee na'n an in min hmantir bakah sawhchiar tui tak min siam sak a, kan lawm hle.

#### **CHUAILO ANNUAL MAGAZINE**

Chuailo annual magazine 2013-2014 chu siam leh tura rel fel a ni ta a, hemi atan hian college/institution hrang hrang thlalak kan mamawh leh dawn a, kuminah hian a huhua thlalakna hun kha hmang loin mahni institution-ah theuh thlak a, October ni 15 hmain **kmschuailo@gmail.com** ah emaw, KMS president hnenah emaw thehluh tur a ni. Heihi CMWA leh CMCS lama kan hruaitute pawhin min ngaih pawimawh sak turin kan inngan a ni.

Annual magazine ami tur article(English leh Mizo) a tam thei ang ber kan mamawh dawn a; member, helama tui leh ziak ve hrim hrim duhte chu ziah theuh tum turin kan inngan a ni. Article leh poem ziahtute tan pawh a chungah email kan tarlanah khian thehluh tur a ni ang.

#### Tualchhung...

#### KMS MEMBERSHIP

Kan Constitution Article no V a a inziah danin a hnuai a kan tarlante hi KMS member ni thei chinte an ni:-

1) Kolkata khawpui leh a chhehvela Mizo zirlai tupawh KMS member an ni.

2) Mizo dang tupawh Kolkata chhunga cheng reng reng chu Associated member an ni.

3) Zirlai, pawl riat(Class VIII) chin chunglamte hnen atangin kumtin Executive Committee-in a tukzat annual fund khawn thin a ni ang.

Khitiang khi kan Constitution a a inziah dan a ni a, Kolkata chhunga Mizo awmte chu member kan ni vek tihna a nih chu.

Kan hma maiah hian KMS annual fund kan rawn khawn leh dawn a, member-te'n thahnemngai taka lo pe vek turin kan inngan a ni. Kuminah hian KMS annual fund hi Rs 100/- a khawn turin KMS Executive Committee chuan a rel a ni.

Tunah hian Kolkata-ah Mizo zirlai 400 vel bawr kan tling thei turah kan inngai.

Annual Fund kan pek that dan a zirin KMS annual magazine pawh kum hmasa lam aia tlawm deuh zawka zawrh chhuah theih tura ruahman a ni a, chuvangin member-te'n thahnemngai taka annual fund hi lo pek vek kan tum dawn nia.

**Hun kal tawh atang hian hun lo la awm tur a hriatlawk theih**

# CHUAILO

Estd. May, 2004

Editor : ahooma  
 Joint Editors : VT.Lawmsanga  
                   : Lalruatkima  
                   : Vanlalpeki Ralte  
 Patron : Alex Rosangluaia



## Enkawltu Kamliam

### Hun kal tawh atanga inzir

Thuhritu chuan, ‘Ni hnuai hian thil thar reng reng a awm lo ve. Miin, “en rawh, heihi a thar a ni,” a tih theih reng reng a awm em ni? Kan awm hma daiha lo awm tawh reng a ni.’ a ti.

Kan thatlai hun kan han hman chho a, kan nu leh pate kan hmu hluiin kan hmu thing a, incheina leh thawmhnaw tunlai ber ber nia kan hriatin kan han incheiin kan han intichangkang vei thin a, an hunlai leh an hmalama miin an lo uar fe tawh leh ‘thing’ an lo tih leh tawh hnu kha kan uar thar leh a ni lek fang si; Ngaihawng leh thianta karah thuruk eng engemaw kan han nei a, kan nu leh pate hriatthiam ve phak loh tur nia kan hriatin kan han lengin kan han inlem vel thin a, an tih hnu vek kan ti a lo ni reng si.

Mihring kan lo pianchhuah hian hma lam pana hmasawn zel hi kan tih tur a ni. Hmasawn tum lo leh hma lam pan duh lo chu mi pangngai an ni lo ang. Hetia hringnuna hma lam kan pan a, thil thar kan zirna kawngah hian thil pawimawh em em mai hmuh hmah leh zir hmah kan nei fo thin a, chu chu ‘hun kal tawh’ hi a ni.

Kan sawi tak ang khian kan hmaa lo kal tawh, kan nu leh pa leh kan pi leh pute chu ‘thil hlui’ hmuhin kan hmu ringawt fo thin a, an thil tawn hnu leh an lo hriat hne hleihlui hnu tiin kan inti changkang ve em em thin. Kan tih mek leh kan tih leh turte hi kan hmaa miin an lo ti tawh thin a ni, tih kan hriat a, chuta tanga inzirna chang kan hriat hi a tha khawp mai.

Helai keini zingah ngei pawh ngaihdan leh duhdan tha tak tak, tunlai tak tak nei kan lo chhuak zel ang, hetiang ngaihdan leh duh dan kan neih hian kan hmaa kalta te’n engtin nge an lo tih? An thatpui nge thatpui lo? tih enlet nachang kan hriat chuan ka tumdan leh duhdante pawh tangkai leh zualin kan hman chhuak thei ang.

Thil kal tawh atanga inzir nachang kan hriat loh chuan ‘mifing’ kan ni thei ngai lo ang. Hun kal tawh ah hian inzirna tur tam tak a awm a ni;

Ni hnuai hian thil thar reng reng a awm lo a, miin an lo tih hnu leh an lo hriat hnu vek a ni si a.

## ZIRNA HUANG...

### CAT

Indian Institute Of Management(IIM) leh India rama Management School thaa Management zir duh tan Common Admission Test(CAT) 2013 ni 5 August atanga 26th September 2013 thleng registration tih theih a ni. Registration hi [www.cat2013.iimindr.ac.in](http://www.cat2013.iimindr.ac.in) ah online a tih tur a ni.

### UPSC

Union Public Service Commission chuan Indian Economic Service leh Indian Statistical Service exam a buatsaih leh dawn a, dt 16.09.13 thleng application form submit theih a ni ang. [www.upsconline.nic.in](http://www.upsconline.nic.in) ah form hi submit tur a ni.

### E & O.E ?

He thil inziak hi kan hmu foin a rinawm, tam tak chuan a awmzia hre lem lo leh ngaihtuah loin kan en liam mai mai thin ang. Errors and Omission Exepted tihna niin, dawra thil i leiin cash memo leh receipt velah i hmu thin ang.

I thil lei zawng zawng an ziah thlak hnuah a man(amount) an ziak ang a, chumi hnuai chiah ah chuan ‘E&O.E’ tih an ziak ang. Chumi awmzia chu dawr ngaktu hi thil tisuul ve thei tho a nih avangin i thil lei man chu a lo chhut sual ve palh thei a, chumi atana thiam an inchantir lawkna ti ila a fiah thei awm e.

Thil i lei reng rengin dawr nghaktute’n an tisuul ve thei a ni tih hria la, hetiang a lo thlen hian thinrim mai loin tha takin bill siam tha leh tura ngen hi a mawi a ni. Dawr i chhuahsan hmah i thil lei leh receipt-a inziak chu a inmil em, tih endik vek thin ang che.

### Entirna:-

#### Tinreng Dawr

Description	Rate	Quantity	Amount
Xerox Machine	2500	1	2500
Printer	1000	1	1000
Computer k.b	2200	2	4400
Kuhva hring	10	10	100
Samkhuih	150	1	150
Dog Shampoo	560	1	560
Zawngtah	20	2	40
Total			8570
			E&O.E

## article

## ZU MAW?

-Call me- Rem Rem, SA Boys

## (BIBLE IN ENGTIN NGE A SAWI?)

Bible hian zu chungchang vawi tam tak a sawi a (Lev 10:9; Num6:3, Deut 29:6, Roreltute13:4,7,14. , thufingte, 31:6-7 & 20:1,34:4. , Isaia 5:11,22. , 24:9, 28:7, 29:9, 56:12). Mahse, Bible hian Beer, uain leh Zu ruih theih chi te chu a khap hranpa lo a. Bible hian a tha zawng a sawi na pawh a nei ve bawk a ni. Thuhrlitu9:7 ah chuan “Thinlung hlimin i uain in rawh”, tiin a sawi ve bawk a. Sam 104:15 ah chuan “mihring thinlung tih lawm na’n uain” hi Pathian in min pe tih a sawi a ni. Amosa 9:14 ah ve thung chuan kan uain thar chu Pathian malsawmna a ni tih entirnan Israel te’n an in tur thu te, Isaia 55:1 chuan uain leh hnutetui te lei tur in a sawm a ni.

“Uain rui in awm suh u, chumi ah chuan insum thiehlohna a awm si a” (Ephesi 5:18). Pathian hian Zu leh Uain kan in hi a khap lo a, mahse a hnathawh (effects) kan ruih hi a phal lo mai zawk a ni (Thufingte23:29-35). Bible chuan Kristian te chu thil engkim kan tih a thianga a, mahse a tha vek kher lo a, kan taksa eng bawih ah mah in phaltir lo tur in min hrilh a ni (I Korinth 6:12). Zu leh Uain in nasat hi a zawngchhang (addictive) theih tih phat rual a ni lo. Bible pawh hian Kristian te chu keini aia fing lo leh chak lo zawk te chhia leh tha hriatna tih buai leh fuih sak hi a khap bur a ni (I korinth 8:9-13). Chuvang chuan Zu leh Uain emaw ruihtheihthil dang vang a chhia leh tha hriatna buai khawp a kan awm chuan I korinth 10:31 in a sawi “In ei leh in, in tih a piangah Pathian ropuina tur hlir in ti rawh u”, tih hi keini Kristian te tan chuan zawm emaw tih a harsa khawp ang, chuvangin kan member pui pakhat in fiamthu a a sawi “keimah hi ka ni tawh lo reng reng”, a tih thleng thleng khawp a excess a in loh tur a ni.

A tawh te a in chu a pawh lo thei ang, mahse hei pawh hi a thiam chu tlem te bak an awm lo ang. Chuvang chuan Kristian te tan chuan in loh hrim hrim kha a him zawk mai a ni.

Isua’n “Ka Pa ramah nangmahni nena a thara ka in ni a thlen hma loh zawng tun a chinah Grep hrui rah a mi hi ka in leh tawh lo ang”, a ti a. Isua khan Uain a in ve thin tih hetah hian a chianga a, tui uain a chantir thu pawh kan hmu a ni (Johana 2:1-12). Thuthlung thar hun lai hian tunlai ang in tui in tur a thianghlim tawh lova, khawl te an la nei changkang lo a, chuvangin huana Grep sawr tui te chu tui aian a thianghlim zawk daih a.



Paula chuan Timothea hnenah a pum vang leh a nat fo avangin tui ai ah uain in zawk turin a ti a ni. Heng hunlai hian uaiin te chu um tawih emaw dawidim (fermented) tawh a ni a, a ruih theih a ni. Hei hi a chianna chu Bible hian Uain ruih hmangte tih thu vawi tam tak a sawi a ni; mahse tunlai ang a kan tih dan nen chuan a in ang kher lo ang. Bible hian Beer, Uaiin leh Zu kan in min khap lova. Zu hrim hrim hi sual a ni hek lo. Ruih theih leh zawngchhang theih a nih avangin Kristian te chu kan inthiarfihlim zawk tur a ni.

Mizote’n hun engemaw tih atang khan kan tu leh fa te hnenah “Zu hi sual a ni, sual tinreng bul chu Zu a ni” tiin an zirtir thin a, naupangte

pawhin zu chu sual a ni tih an rilruah a lo awm a, hei hi a chhan chu kan nu leh pate zirtirna kan thanlen pui tawh vang a ni. Zu tlemte in hi taksa tan a hlauhawm lo a, Dortor thenkhat phei chuan an chawh hial thin.

Tlemte a zu kan in thiam/theih chuan chu chu Kristian te tan zalenna pakhat a ni. Zu ruih leh a ngawl vei erawh chu sual a ni a, Zu chu sual ni lo mahse rui khawp a kan in erawh chuan Bible in a sawi “Chumi ah chaun insum theihlohna a awm si a” (Ephesi 5:18) a tih angin thil sual tih chak zelna a hring a, chu chuan sual khur thuk takah min hrui lut ta thin a ni. Tin kan bula awm te tan hnawksak leh ngaihtuahna tha lo thlen thei kan nih avangin Kristian te tan chuan zu lak a kan fihlim hi a ngai a ni.

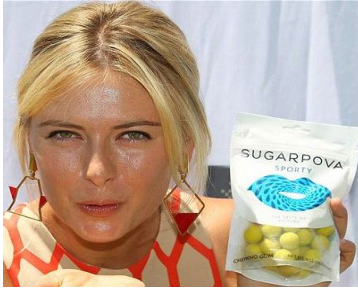
***“Zu um tura zing tak tak a tho a  
Uain in a tih ruih bung hma lova  
Zan rei tak tak thlenga awm thin te chu  
An chung a pik e!!!!”***

*(Isaia 5:11,12)*



**SUGARPOVA LEH DAWN LO**

M a r i a Sharapova chuan kar hnih chhung atan a hming thlak a, US Open khelch chhung 'Sugarpova' tih hming put a tumna chu a hlawhtling dawn ta lo.



He thil hi chithlum mum hralh kal na' n tih a ni a, kum 26 mi Maria Sharapova leh a management team te chuan Supreme Court, Florida-ah hming thlak dilna hi thehlutin, anni paw'n an lo phalsak diam tawh a ni. A kawrah pawh he Sugarpova logo (A hmui lem) chu a chhut kai tura tih a ni bawh.

He Russian tennis star hian US Open chhung he a hming hi pu tura ruahman a ni a; amaherawhchu a dar hliam vanga US Open a khelch leh theih dawn loh avangin an thil tum chu a hlawhtling dawn ta lo a ni.

**Formula 1**

Belgian GP practice race an neihah Red Bull driver Sebastian Vettel leh Ferrari driver Fernando Alonso te ke hnung dinglam a chhe ve ve a. Formula 1 driver-te chuan kumina Pirelli ke that tawklonhna chunna atan a hlauhawm zia an sawi chhuak leh ta.

Pirelli motosport director Paul Hembery pawhin he thil hi lungngaihna tham a nih zia leh nasa taka ngaihtuahna an sen mekna a nih thu a sawi chhuak in, tun tuma chhiatna thleng erawh hi chu tyre lam ni lo in, pawnlam atanga chhiatna thleng ni zawka a ngaih thu a sawi chhuak bawh; Mahse driver thenkhat chuan Pirelli insawi thiamna hi pawm harsa an ti hle.

**FOOTBALL TRANSFER TITI**

Arsenal midfielder ni thin Mathieu Flamini chu Emirates Stadium-a kir leh turin tunah hian Arsenal chuan hma an la mek. Flamini hian tunah hian North London Club training naah hun a hmang ve mek a, Arsenal nen hian inbe rem vat tura ngaih a ni a, he thu i chhiar hi chuan Arsenal player a ni fel tawh maithei. Gunners hian Real Madrid forward Benzema leh Di Maria lei tumin an dawr mek bawh a, Benzema manah hian £40m thehchhuah an phal thu an sawi chhuak tawh.

Chelsea chuan Tottenham in an lei hual, a an veh reng Willian-a chu £30m in an la lut dawn ta. Celsea leh Willian te hi an inbe fel thawkhaw tawh.

# Nakum world cup chu single leh pawt ang a... a lehpekah chuan single tawh lo ang

- **Mapuia Fin.Secy**

# Hmangaihna hian ramri a lo kham thei lo a nih hi, train-ah kan chuang deuh reng mai.

- **PC.Puia**

# Tawngtai laia men ruk hi a young tawp.

- **Temami (Pikachu)**

# Miss Fresher tan laptop servicing kumin chhung atan a thlawnin ka tihsak thei e.

- **Samu-a SA**

# Haw dawn hnaih lamah ka discipline a'n chhiat leh thut chu le.

- **Fela discipline-a**

# Zirlai nih a, in han luah leh takah chuan tlangvalte pawh chaweiah kan sawm ve tan a...

- **Thanmawii Hmar**

# Ka nula mi hle...

- **Robert, East Bengal**

# Ulhbuna min kah apiang hian zanah min dawp ziah a nia...

- **Sawmtea,Secy.**

# Vawiin chu dawt sawi nual teh ang.

- **U Samu-a**

# Trying hard to forget You...

- **Jenifer, SA Girls**

# Zantiang tawnmangah lo leng thin rawh aw...

- **Oshin**

# Love me for a million year...

- **Apuii, Xavier**

# Eden Garden bul vel kawngpui saw Delhi nen a lo va in ang em em.

- **Jona, Zai mi**

# Duh chen chen light a on theih tawh a, nuam e....

- **Flora Fanai, Ex- SA Girls**

# In atchilhtir dan leh thinrim si loa tih beidawn thak dan bu ka zia mek...

- **Siami Loreto**

# Hruaitu nih hi chu ka va tlin tak..

- **Lawma Keshtopur**

# Airport-ah buaina in neih chuan security hmelhriat ka nei a nia.

- **Mafela Keshtopur**